

CAT ELECTRONIC TECHNICIAN (Cat ET)

1. CAT ET 2009B
2. Interface of Allscanner VCX HD
3. CAT 9 pin
4. CD with installation and manual can install on any laptop

Caterpillar Electronic Technician (Cat ET*) is the diagnostic software required to communicate, diagnose and service electronically controlled Caterpillar engines and machines. Cat ET provides real-time updates on machine status, as well as diagnostic and event codes, allowing users to see and repair problems quickly

Cat ET Features:

- On-highway truck engine warranty reports
- Parameter status display
- Active diagnostics display
- Logged diagnostics viewing and clearing
- Logging and viewing of irregular ECM occurrences
- Diagnostic tests
- Calibrations
- Retrieve engine totals for fuel used, miles traveled and more
- English and metric units of measure
- Integrated help file

Cat support language:

- **English**
- **Chinese**
- **Danish**
- **German**
- **Spanish**
- **France**
- **Italian**
- **Japanese**
- **Portuguese**

updates in ET 2010A

Trainer Enhancement

The Trainer application has been updated to include current machine and engine models.

New Help Desk Email Address

The new email address for the Help Desk is [x]

The phone numbers are unchanged [x]

Product Status Report Enhancements

Injector Trim Calibration information is now included in the download list when available.

By default, the Product Status Report screen is now accessible by pressing the F6 key. The function key assignment may be changed by using the Customize Function Keys feature available through the View menu.

Toolbar Updates

The Enable Trainer and Disable Trainer icons have been combined into a single icon that toggles. When the service tool is launched, the Enable Trainer icon appears. When it is clicked, Trainer will be launched, and the Disable Trainer icon will be displayed.

The Connect and Disconnect icons have been combined into a single icon that toggles. If an ECM connection exists, the Disconnect icon is displayed. If no ECM connection exists, the Connect icon is displayed.

The Help and Exit icons have been removed from the default toolbar, although these functions can still be accessed via the F1 key (Help) and F9 key (Exit). These icons can still be added to the toolbar using the Toolbar Customization feature, available through the View menu.

New Directory Preferences

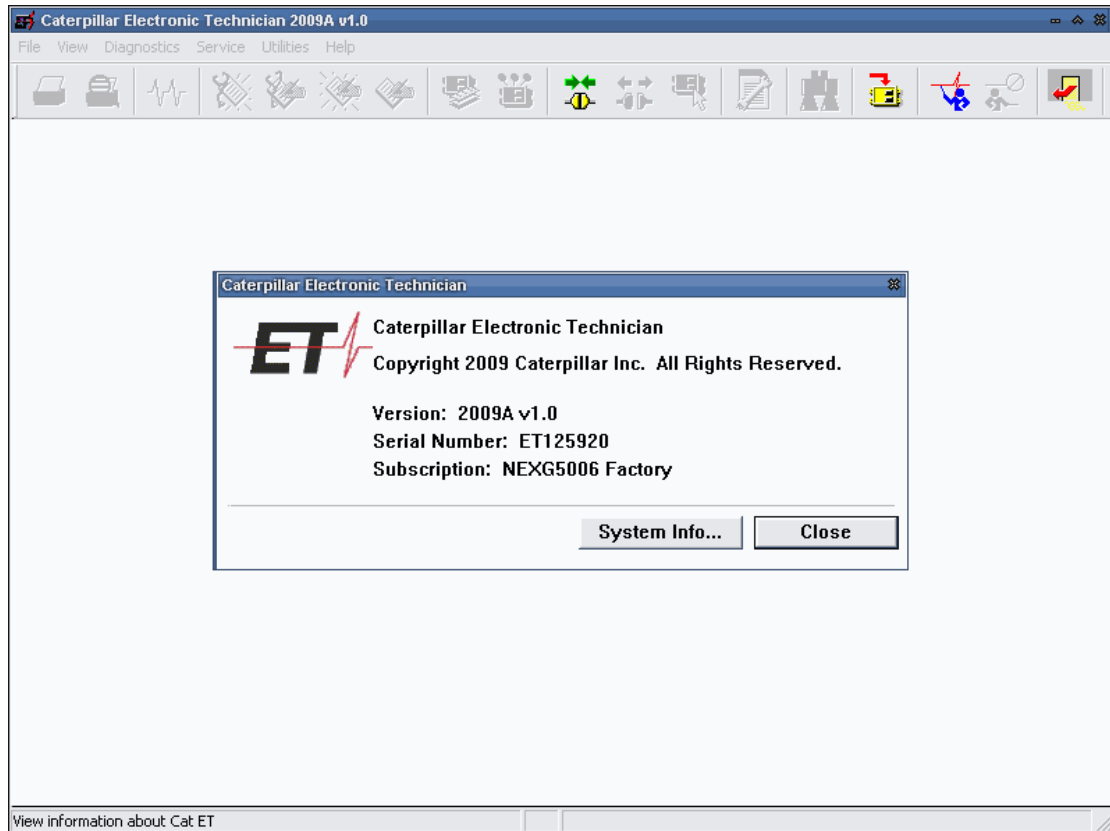
Users can now set the default directory for Data Log Report Files by selecting Preferences from the Utilities menu.

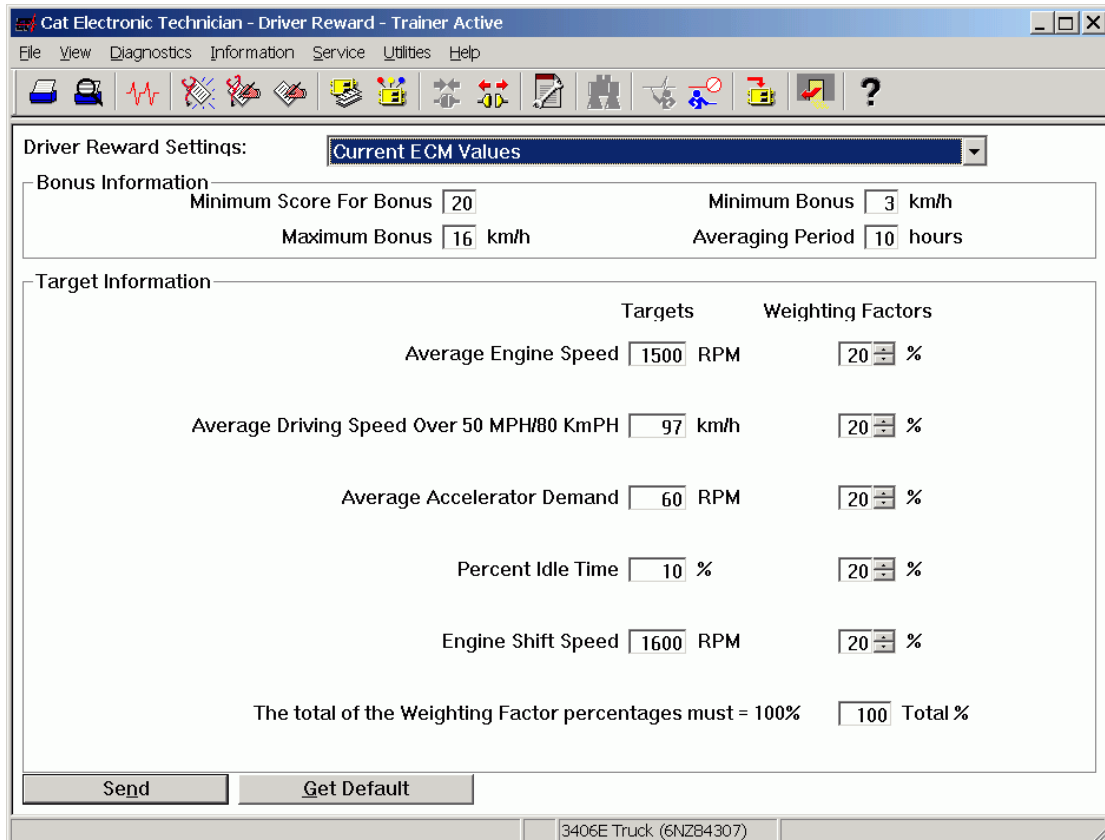
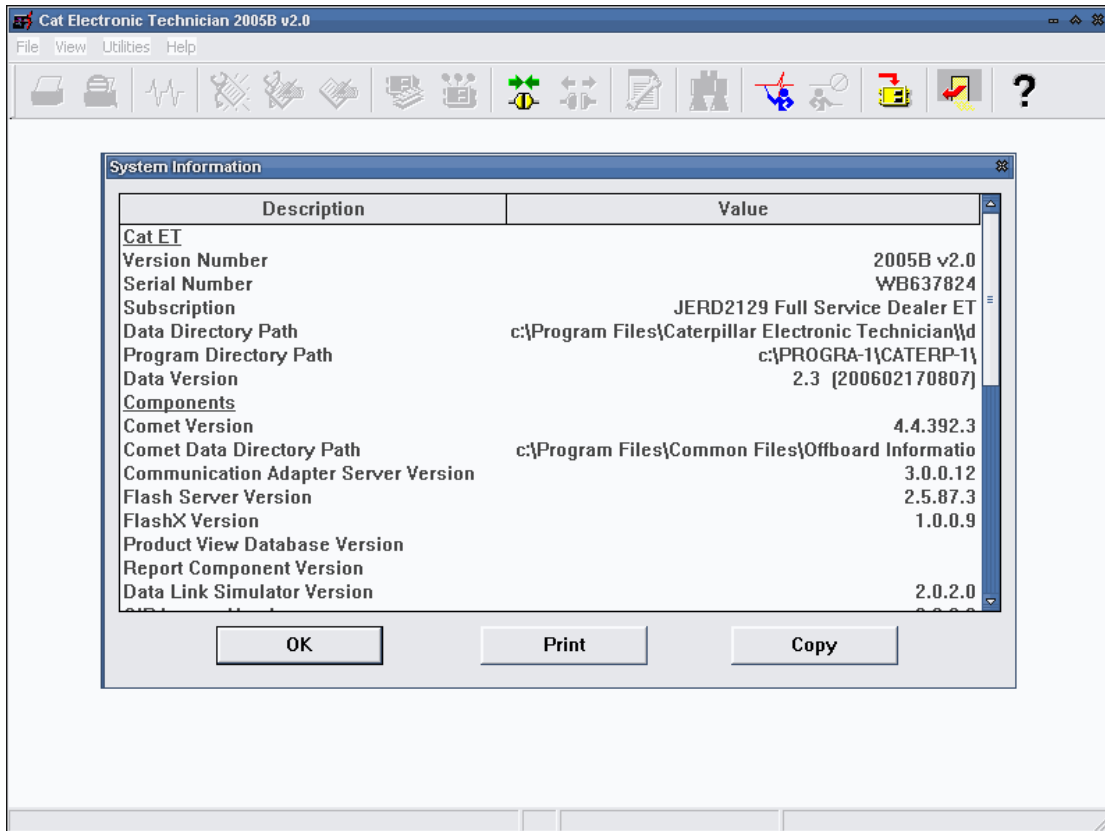
Windows 7 Support

The service tool has been verified to function on the Windows 7 operating system. However, the CA3 is not functional on a Windows 7 64-bit PC.

This is a known issue and will be addressed in a future release. If any other issue arises, please contact the Help Desk for assistance.

Software Overview





Cat Electronic Technician - Status - Trainer Active

File View Diagnostics Information Service Utilities Help

3406E Truck (6NZ84307)

- Status Group #1
- Status Group #2
- Status Group #3
- Status Group #4
- Status Group #5
- Status Group #6
- Status Group #7
- Status Group #8
- Status Group #9
- Status Group #10
- <TEMPORARY GROUP>

Description	Value	Unit	Min	Max
Vehicle Speed	62	km/h	62	62
Engine Speed	1212	RPM	1212	1212
Throttle Position	19	%	19	19
Fuel Position	11,50	mm	11,50	11,50
Boost Pressure	140	kPa	140	140
Engine Oil Pressure	DIAG	70	kPa	
Engine Coolant Temperature	DIAG	110	Deg C	
Engine Retarder	Disabled			

Groups... Zoom In Hold Active Codes

Status Group #1 3406E Truck (6NZ84307)

Cat Electronic Technician - Active Diagnostic Codes - Trainer Active

File View Diagnostics Information Service Utilities Help

3406E Truck (6NZ84307)

Low Oil Pressure

Code	Description
3406E Truck (6NZ84307)	
100-3	Oil Pressure voltage high (24)
105-3	Intake Manifold Air Temperature voltage high (38)
108-3	Barometric Pressure voltage high (26)
110-3	Coolant Temperature voltage high (27)
174-3	Fuel Temperature voltage high (13)
247-11	Brake Pedal Switch #2 Fault

Troubleshoot Code Include All ECMs

3406E Truck (6NZ84307)